



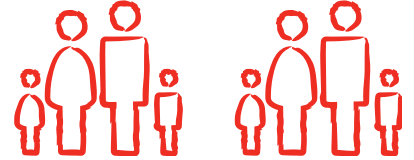
# Hobbs, New Mexico: Fast Facts

## Population & Demographics



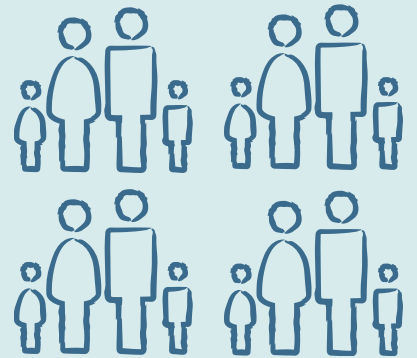
**51,736**

Hobbs Population (CCD)



**74,455**

Lea County Population



*\*Source: U.S. Census Bureau; American Community Survey*

## Age Distribution City of Hobbs

### AGE DISTRIBUTION (2020)

<b>0-19</b>	<b>33.5%</b>
<b>20-34</b>	<b>22%</b>
<b>35-54</b>	<b>23.7%</b>
<b>55-64</b>	<b>10.9%</b>
<b>65-74</b>	<b>5.7%</b>
<b>75 and over</b>	<b>4.2%</b>
<b>Median Age</b>	<b>31</b>

*\*Source: U.S. Census Bureau; American Community Survey / 5 Year Estimates Data Profile*

## Population Growth 2010-2020

**19%**

City of Hobbs

**15%**

Lea County

*\*Source: U.S. Census Bureau; 2020 Decennial Census*

# Quality of Life

## Housing Costs

**\$239,491**   
Average Sales Price

 **\$188,400**  
Median Home Price

\*Source: U.S. Bestplaces.net/ NMMLS

# #6

Lowest cost  
of living  
New Mexico  
-Lea County

## Cost of Living



# 78.5

Cost of Living Index

Note: (U.S. Average = 100)

Source: Bestplaces.net

## Education

Hobbs High School has the highest graduation rate among large schools in New Mexico



Hobbs High School  
Graduation Rate

# 87.7%

\*Source: NM Public Education Department

## New Mexico Junior College

# #1

workforce  
training and  
outreach  
program in  
New Mexico

Offers  
certificate  
and associate  
degrees

Serves  
over 3,000  
students

## HOUSEHOLD INCOME DISTRIBUTION

HOUSEHOLD INCOME DISTRIBUTION	CITY OF HOBBS	LEA COUNTY
Households	15,804	22,868
Less than \$35,000	30.7%	29.3%
Between \$35,000 and \$75,000	31.1%	32.1%
Greater than \$75,000	38.3%	38.7%
Average Household Income	\$79,865	\$78,407

\*Source: U.S. Census Bureau; American Community Survey



**\$50M** vocational-technical (CTE)  
high school opened  
August 2022

## University of the Southwest



Four-year  
private,  
Christian  
University



Bachelor's,  
Master's, and  
Doctoral degree  
programs



Extensive  
online degree  
program  
options

## Climate

# 266

Sunny Days



# 42.7

Precipitation Days

**93.4°** Average July High

**28.7°** Average January Low

Source: Bestplaces.net

# Doing Business

## Labor

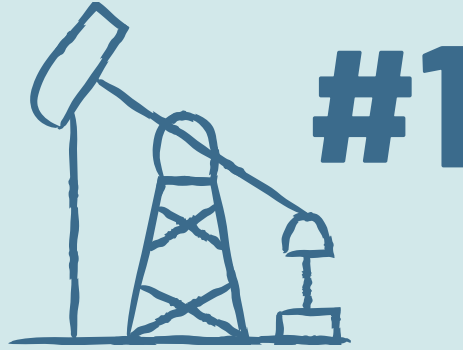
**8,000+**  
people employed in  
Lea County's oil and  
gas industry

## Civilian Labor Force (Average Annual)

**7.9%**

% Change 2013-2018  
City of Hobbs

*\*Source: U.S. Bureau of  
Labor Statistics*



Oil-Producing  
County in the  
Nation  
Lea County, NM  
Oil-Producing  
Basin in the World  
The Permian Basin

## EMPLOYMENT - INDUSTRY

INDUSTRY	PERCENTAGE OF TOTAL EMPLOYMENT
Mining, quarrying, and oil and gas extraction NAICS 21	20%
Construction NAICS 23	9%
Retail trade NAICS 44-45	11%
Accommodation and food services NAICS 72	11%

*\*Source: Department of Workforce Solutions,  
OCEW Q4 2021*

## MAJOR PRIVATE SECTOR EMPLOYERS

COMPANY	# OF EMPLOYEES
Nor-Lea Hospital	595
Walmart SuperCenter	400
Watson Construction	339
Mewbourne Oil Company	300
Constructor Inc.	300
D&D Pipeline Construction	300
Albertsons Market	250
Ferguson Construction Company	243
Miracle Hom Health Care	240
URENCO/national Enrichment Facility	231
Mcdonald's Restaurants	230
Ingram Professional Services	230
Covenant Health	220
GEO Lea County Correctional Facility	198
Zia Park Casino Hotel & Racetrack	170
Lin-Mar Inc	150
Cudd Energy Services	150
Nova Mud	150
Lucky Services	150
RMS Foods	125

*\*Source: Economic Development Corporation of Lea County*

**146,500+** Number of people Hobbs serves as a retail center

## Transportation & Access

Easy access to communities like Albuquerque, Santa Fe, Midland, Lubbock, and Dallas

### AIRPORT

Lea County Regional Airport (HOB)

**1 Mile** West of Hobbs



Daily flights to/from Houston & Denver, connecting you to more than **350 destinations worldwide**





**At The Heart of The Permian Basin**

**CONTACT DETAILS**

Jennifer Grassham | President/CEO  
Economic Development Corporation of Lea County  
575.397.2039 | [jennifer@edlc.org](mailto:jennifer@edlc.org)

**For more information, visit [choosehobbsnm.com](http://choosehobbsnm.com)**

