



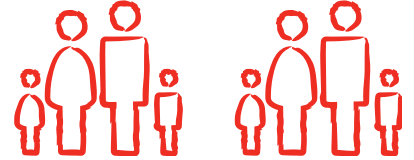
Hobbs, New Mexico: Fast Facts

Population & Demographics



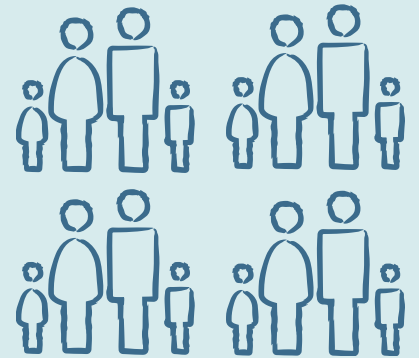
47,240

Hobbs Population (CCD)



69,505

Lea County Population



**Source: U.S. Census Bureau; American Community Survey*

Age Distribution City of Hobbs

AGE DISTRIBUTION (2017)	
0-17	30.4%
18-34	25.6%
35-54	23.8%
55-64	9.7%
65-74	5.7%
75 and over	4.7%
Median Age	31

**Source: U.S. Census Bureau; American Community Survey*

Population Growth 2010-2017

13.6%

City of Hobbs

11.2%

Lea County

**Source: U.S. Census Bureau; American Community Survey*

Quality of Life

Housing Costs

\$131,700
Average Sales Price



\$170,000
Median Home Price



*Source: U.S. Census Bureau; American Community Survey and Bestplaces.net

#3

Lowest cost
of living
New Mexico
-Lea County

Cost of Living



83.2

Cost of Living Index

Note: (U.S. Average = 100)

Source: Bestplaces.net

Education

Hobbs High School has the highest graduation rate among large schools in New Mexico



Hobbs High School
Graduation Rate

90.3%

*Source: NM Public Education Department

New Mexico Junior College

#1

workforce
training and
outreach
program in
New Mexico

Offers
certificate
and associate
degrees

Serves
over 3,000
students

HOUSEHOLD INCOME DISTRIBUTION

HOUSEHOLD INCOME DISTRIBUTION (2017)	CITY OF HOBBS	LEA COUNTY
Households	11,763	22,029
Less than \$35,000	32.9%	29.3%
Between \$35,000 and \$75,000	31.5%	33.6%
Greater than \$75,000	35.6%	37.2%
Average Household Income	\$73,548	\$74,244

*Source: U.S. Census Bureau; American Community Survey

\$50M

vocational-technical (CTE)
high school planned for
groundbreaking in 2020

University of the Southwest



Four-year
private,
Christian
University



Bachelor's,
Master's, and
Doctoral degree
programs



Extensive
online degree
program
options

Climate

266

Sunny Days



42.7

Precipitation Days

93.4° Average July High

28.7° Average January Low

Source: Bestplaces.net

Doing Business

Labor

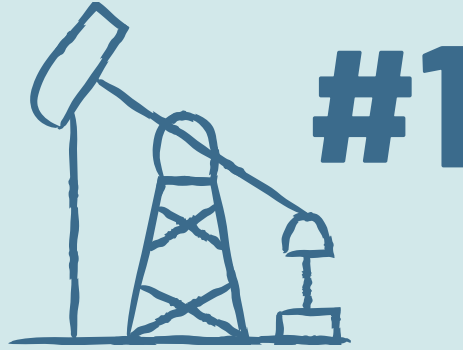
8,000+
people employed in
Lea County's oil and
gas industry

Civilian Labor Force (Average Annual)

7.3%

% Change 2013-2018
City of Hobbs

**Source: U.S. Bureau of
Labor Statistics*



Oil-Producing
County in the
Permian Basin
Lea County, NM
Oil-Producing
Basin in the World
The Permian Basin

EMPLOYMENT - INDUSTRY

INDUSTRY	PERCENTAGE OF TOTAL EMPLOYMENT
Mining, quarrying, and oil and gas extraction NAICS 21	26%
Construction NAICS 23	12%
Retail trade NAICS 44-45	12%
Accommodation and food services NAICS 72	11%

**Source: U.S. Bureau of Labor Statistics*

MAJOR PRIVATE SECTOR EMPLOYERS

COMPANY	# OF EMPLOYEES
Nor-Lea Hospital	575
Watson Construction	485
Walmart SuperCenter	386
McDonald's Restaurant	350
Ferguson Construction Company	335
URENCO/National Enrichment Facility	330
Lea Regional Medical Center	305
Constructors Inc.	300
D&D Pipeline Construction	300
Zia Park Casino Hotel & Racetrack	250
GEO Lea County Correctional Facility	241
Miracle Home Health Care	240
Lin-Mar Inc.	230
Albertson's Market	225
Ingram Professional Services	200
Mewbourne Oil Company	176
Cudd Energy Services	150
RMS Foods Inc.	150
Nova Mud	150
Lucky Services	150

**Source: Economic Development Corporation of Lea County*

146,500+ Number of people Hobbs serves as a retail center

Transportation & Access

Easy access to communities like Albuquerque, Santa Fe, Midland, Lubbock, and Dallas

AIRPORT

Lea County Regional Airport (HOB)

1 Mile West of Hobbs



Daily flights to/from Houston & Denver, connecting you to more than **350 destinations worldwide**



